

A CONCEPTUAL MODEL OF FAMILY SAFETY TO INFORM FUTURE RESEARCH AND PREVENTION EFFORTS

Christin M. Ogle^{1,2}, Aaron B. Weingrad^{1,2}, Rafael F. Zuleta^{1,2}, Joscelyn E. Fisher^{1,2}, Tasanee R. Walsh^{1,2}, & Stephen J. Cozza¹

¹Center for the Study of Traumatic Stress, Department of Psychiatry, Uniformed Services University of the Health Sciences, Bethesda, MD

²Henry M. Jackson Foundation for the Advancement of Military Medicine, Inc., Bethesda, MD

INTRODUCTION

- Family safety is influenced by behaviors and factors across multiple domains
- Prior studies have focused on family safety in the context of a *single domain* or on *individual-level* safety (i.e., child safety)¹⁻³
- Poor safety at the *family-level* negatively impacts multiple outcomes considered high-priority by the DoD, including suicidal behaviors, accidents, injuries, substance use problems, and family violence
- A more holistic model of family safety is needed to:
 1. Advance understanding of how multiple domains of risk combine to influence negative outcomes of all family members
 2. Inform prevention strategies to mitigate high-risk outcomes

METHOD

- A systematic literature search was conducted to identify components of family safety from various fields
- Risk domains identified as related to the concept of family safety were incorporated into a single model

PROPOSED CONCEPTUAL MODEL

- We propose a model of family safety in which the safety of a family is determined by the confluence of behaviors and factors across multiple domains, including **home safety practices, home physical environment, family access to resources, community safety, interpersonal skills,** and **safe parenting**
- Figure 1 illustrates the intersectionality of these domains and their connection to overall family safety
- The proposed model is intended to guide future research, identify at-risk families, and inform the development of prevention strategies that target the various domains and their intersectionality

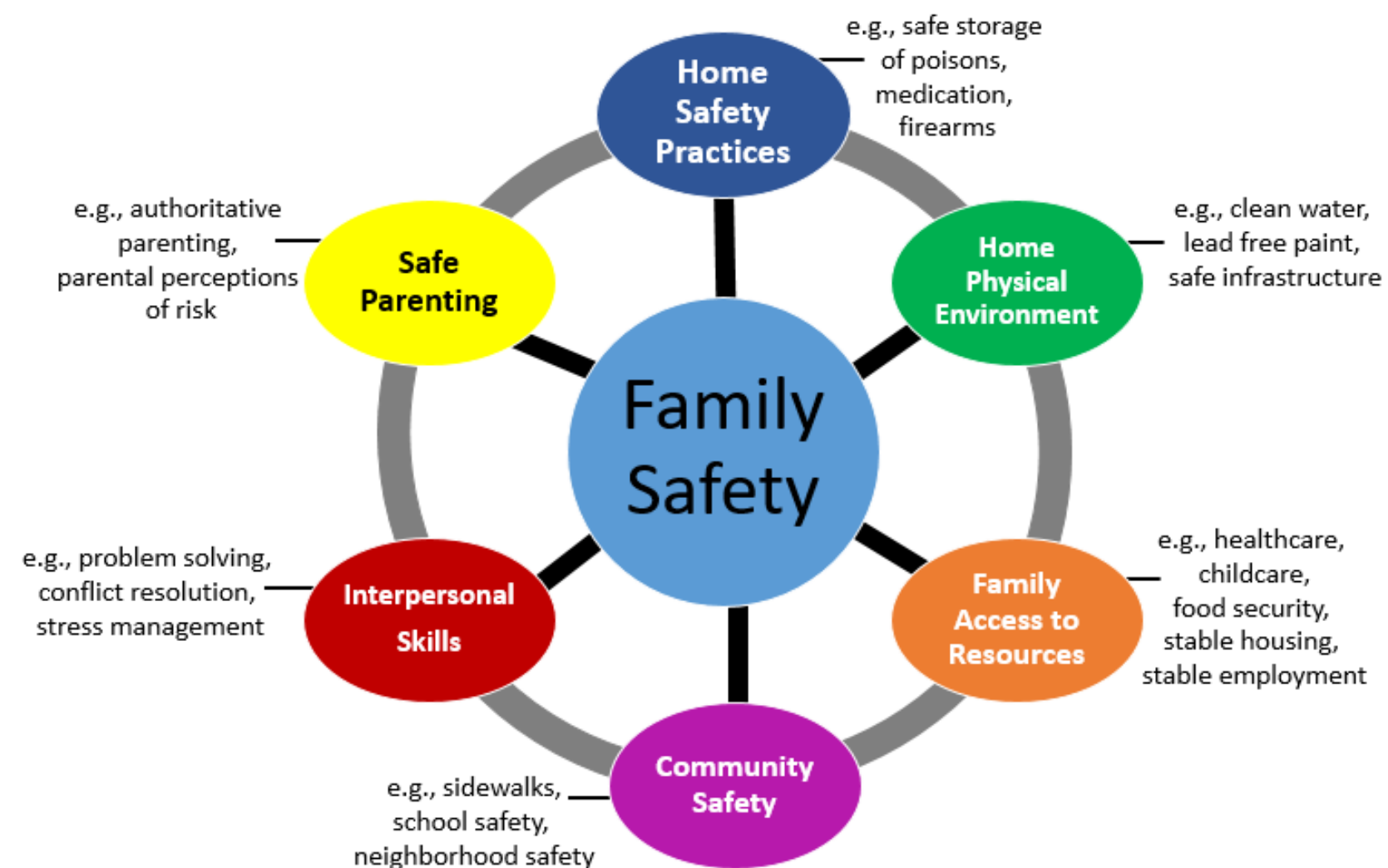


Figure 1. The proposed conceptual model of family safety that illustrates the range of social, environmental, and structural factors that contribute to family safety.

DISCUSSION

- Current approaches to family safety primarily focus on single risk domains and individual-level safety
- Our proposed conceptual model addresses these limitations of the extant literature by describing the multiple social, environmental, and structural factors that contribute to the safety of families
- The model underscores the need for stakeholders from multiple fields (e.g., public health, social work, urban development, community policy) to work together to develop initiatives that promote family safety
- Future research based on this conceptual model can provide an empirical foundation for the development of prevention efforts to address the multiple domains proposed to contribute to family safety and high-risk outcomes

REFERENCES

1. Schwebel, D. C., & Barton, B. K. (2005). Contributions of multiple risk factors to child injury. *Journal of Pediatric Psychology, 30*(7), 553-561.
2. Mayes, S., Roberts M. C., & Stough, C. O. (2014). Risk for household safety hazards: Socioeconomic and sociodemographic factors. *Journal of Safety Research, 51*, 87-92.
3. Rhodes, K. V., & Iwashyna, T. J. (2007). Child injury risks are close to home: Parent psychosocial factors associated with child safety. *Maternal and Child Health Journal, 11*(3), 269-275.

HJF Disclaimer: The contents of this publication are the sole responsibility of the author(s) and do not necessarily reflect the views, opinions or policies of The Henry M. Jackson Foundation for the Advancement of Military Medicine, Inc.

USU disclaimer: The opinions and assertions expressed herein are those of the author(s) and do not necessarily reflect the official policy or position of the Uniformed Services University or the Department of Defense.